

How can we make inclusive education easier for you?

Our calls can support also you in the form of individual projects systemic and individual projects other or through simplified projects - templates.

The schedule of calls is available on the website opvvv.msmt.cz, tab Calls (Výzvy).

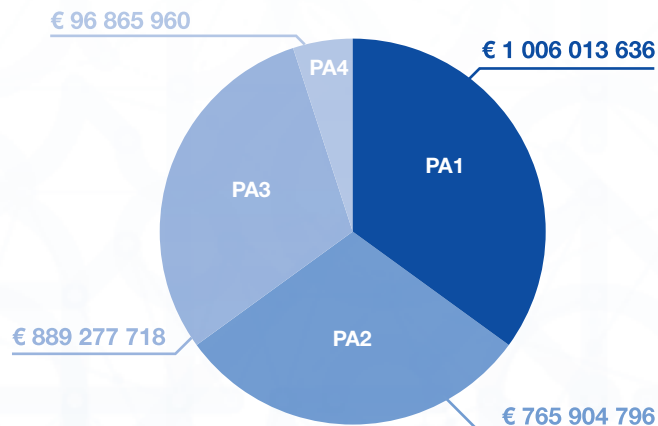
We organise seminars on the calls. Register on our website.

Where to get more information?

opvvv.msmt.cz
www.msmt.cz
www.facebook.com/opvvv/
opvvv@msmt.cz

OP RDE allocation in the period 2014 - 2020

A total of EUR 2.8 billion



Priority axis 1

Strengthening capacities for quality research

Priority axis 2

Development of higher education and human resources for research and development

Priority axis 3

Equal access to quality preschool, primary and secondary education

Priority axis 4

Technical assistance

WE HELP TO HELP, TEACH AND EXPLORE

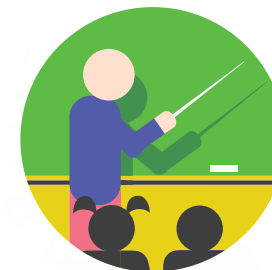
MORE MONEY FOR SCHOOLS, SCIENCE AND RESEARCH

opvvv.msmt.cz



EUROPEAN UNION
European Structural and Investment Funds
Operational Programme Research,
Development and Education

MSMT
MINISTRY OF EDUCATION,
YOUTH AND SPORTS



OP RDE supports inclusive education

Who we are

Operational Programme Research, Development and Education (OP RDE) of the Ministry of Education, Youth and Sports is one of the thematic programmes that you can use to obtain funding from the Structural and Investment Funds of the European Union until 2023.

Objective

Our priorities include the promotion of inclusive education in regional schools at all levels of education, including extracurricular activities.



Teacher training

- personality and social development of teachers
- experiential and awareness-raising training of teaching staff
- work with heterogeneous groups
- work with children and pupils needing support measures



Workshops for parents

- cooperation and awareness-raising activities with parents
- sharing information on inclusive education
- meetings between parents and teachers
- involvement of parents in school activities

Our school

we get trained - we cooperate - we share experience

We already know how

The cooperating team of our school

- teacher
- parent
- child/ pupil
- social pedagogue
- school psychologist
- social pedagogue
- school assistant
- a representative of the educational counselling facility
- teacher from a sister school

We're going to the first grade



"We have chosen primary school of B. Hrozný in Lysá nad Labem for our daughter. That school has long supported inclusive education."

Individual approach

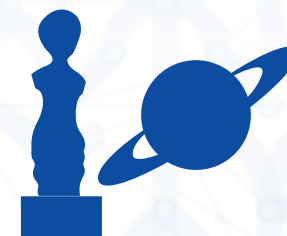
- the maximum development of the potential of every child/ pupil of the school
- creating a safe and positive climate in the classroom
- help with preparation for classes

Networking among schools

Teachers share their experience.



Leisure activities



"At school, they have arranged for an Elder Friend for me who accompanies me to the museum or the planetarium."