

## How can we make inclusive education easier for you?

Our calls can support also you in the form of individual projects systemic and individual projects other or through simplified projects - templates.

The schedule of calls is available on the website [opvvv.msmt.cz](http://opvvv.msmt.cz), tab Calls (Výzvy).

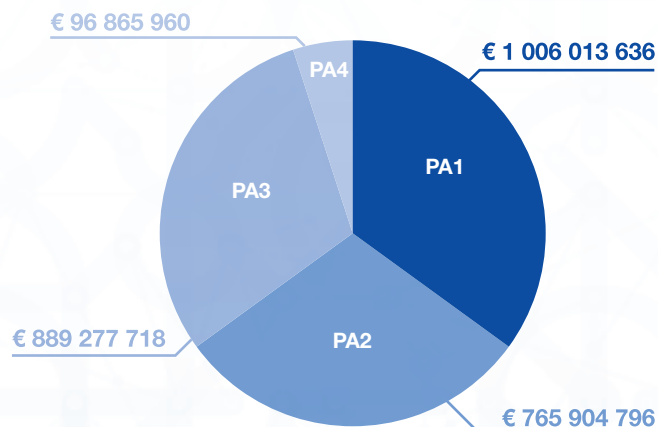
We organise seminars on the calls. Register on our website.

## Where to get more information?

[opvvv.msmt.cz](http://opvvv.msmt.cz)  
[www.msmt.cz](http://www.msmt.cz)  
[www.facebook.com/opvvv/](https://www.facebook.com/opvvv/)  
[opvvv@msmt.cz](mailto:opvvv@msmt.cz)

## OP RDE allocation in the period 2014 - 2020

A total of EUR 2.8 billion



### Priority axis 1

Strengthening capacities for quality research

### Priority axis 2

Development of higher education and human resources for research and development

### Priority axis 3

Equal access to quality preschool, primary and secondary education

### Priority axis 4

Technical assistance

## WE HELP TO HELP, TEACH AND EXPLORE

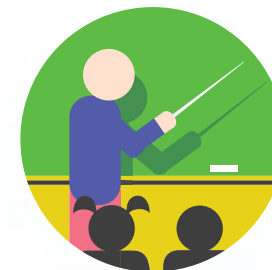
MORE MONEY FOR SCHOOLS, SCIENCE AND RESEARCH

[opvvv.msmt.cz](http://opvvv.msmt.cz)



EUROPEAN UNION  
European Structural and Investment Funds  
Operational Programme Research,  
Development and Education

MSMT  
MINISTRY OF EDUCATION,  
YOUTH AND SPORTS



## OP RDE supports regional schools

### Who we are

Operational Programme Research, Development and Education (OP RDE) of the Ministry of Education, Youth and Sports is one of the thematic programmes that you can use to obtain funding from the Structural and Investment Funds of the European Union until 2023.

### Focus

OP RDE focuses on improving the quality of education, ensuring conditions for quality research, interlinking education and research with the labour market and strengthening the principle of equal access to education at all levels of education, starting with nursery schools.



## Preschool education

- Support for work with two-year-olds (nannies in nurseries)
- facilitating the transition of children from nursery to primary school
- speech defects prevention

## Increasing competences

- development of key competences
- teacher training
- development of critical thinking
- sharing experience among teachers

# OP RDE supports regional schools

NURSERY SCHOOL • PRIMARY SCHOOL  
SECONDARY SCHOOL  
POST-SECONDARY VOCATIONAL SCHOOL

## The basic objective

Promoting the potential of each child or pupil and developing their competences.

## What we support

- improving the education for children and pupils at risk of failure
- inclusive education
- developing manual skills of children and pupils
- innovation of post-secondary vocational education
- polytechnic education
- development of foreign language and social competences

## Preparing for employment

- supporting creativity and entrepreneurship
- career consultancy
- involving experts in teaching
- cooperation between schools and employers
- professional foreign language



## Interconnecting formal and non-formal education

- Support for non-formal education
- clubs for board games and fun logic
- reading clubs
- support for basic arts education
- cooperation between schools, libraries and museums

