

OP RDE IN NUMBERS



EUROPEAN UNION
European Structural and Investment Funds
Operational Programme Research,
Development and Education



MINISTRY OF EDUCATION,
YOUTH AND SPORTS

The name of the publication:
OP RDE IN NUMBERS

Publisher: Ministry of Education, Youth and Sports

Photographs: archives of individual projects

Prague, 2020

<https://opvvv.msmt.cz>

e-mail: opvvv@msmt.cz

Not for sale

ISBN: 978-80-87601-16-7



Foreword

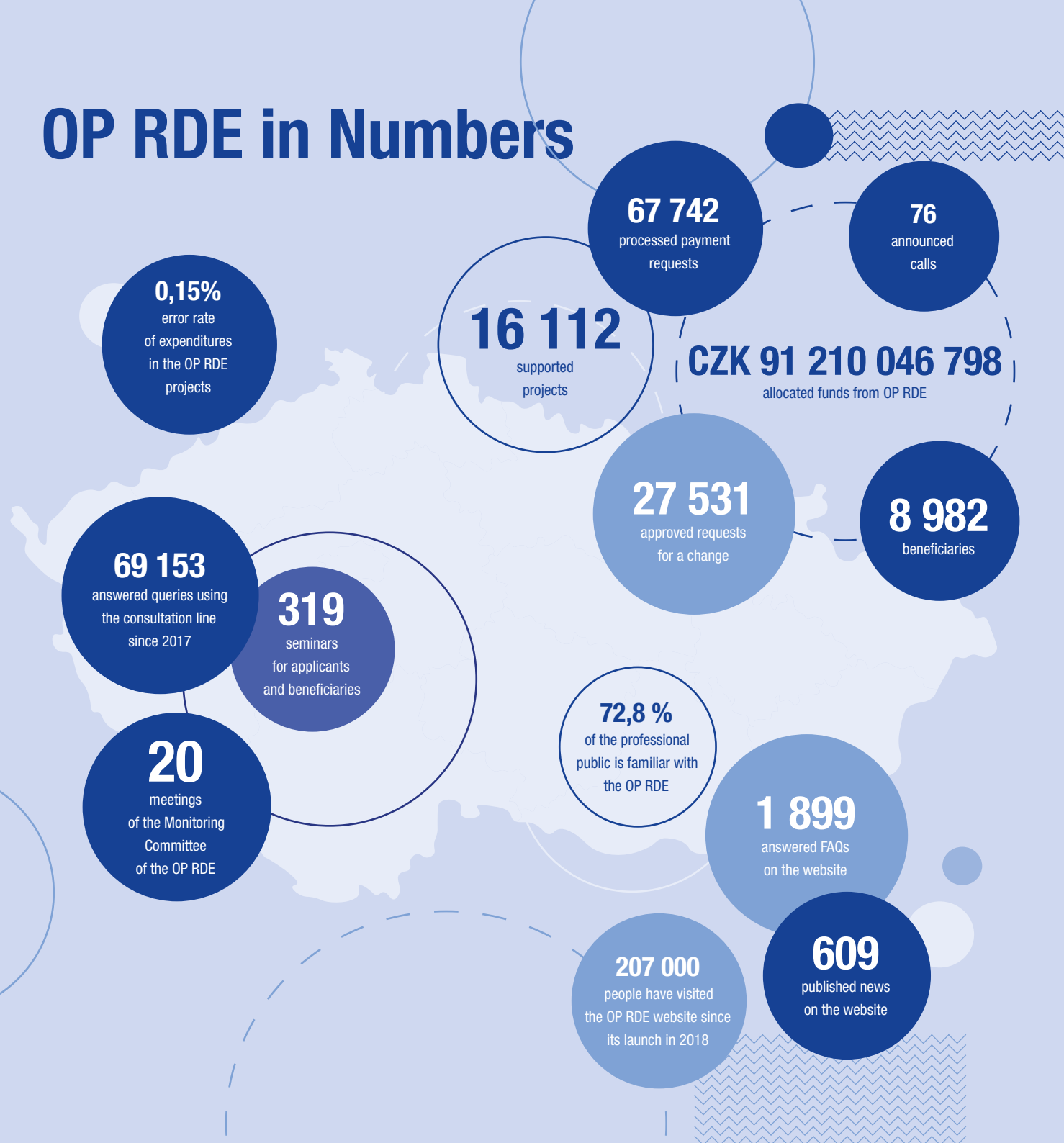


According to the Gospel of John, in the beginning was the Word, but in real life it doesn't work without numbers. And it is not possible at all to manage the cohesion policy without numbers. This publication will introduce you to interesting facts from the management and implementation of the Operational Programme Research, Development and Education (OP RDE). To its BEST. However, we should not forget what stands behind all those numbers: enormous toughness, enthusiasm, diligence and activity on the side of the beneficiaries and employees of the Managing Authority. At this point I would like to thank them all. They have proven that interventions in education and research make sense and move the Czech Republic towards an open and educated society. And that brings us back to words and their meaning through numbers. I wish you all a pleasant reading.

PhDr. Mgr. Václav Velčovský, Ph.D.

Vice Minister for EU a ESIF, MEYS

OP RDE in Numbers

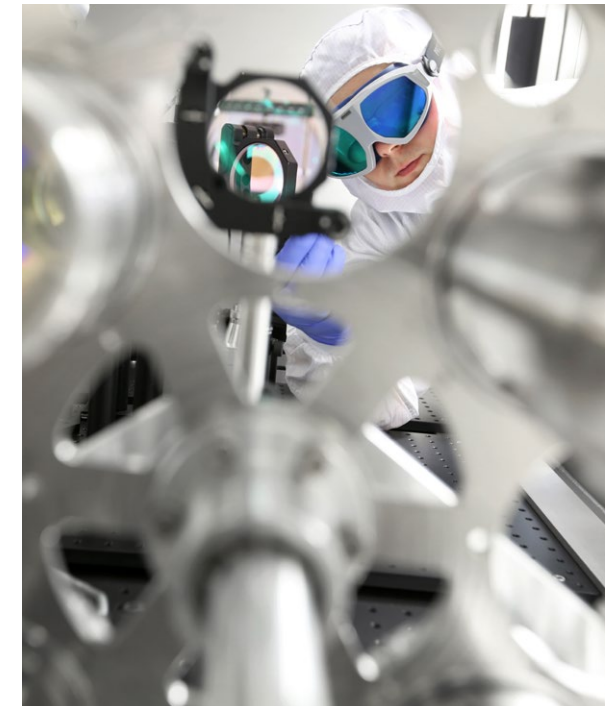


The “BEST” from OP RDE

The project with the highest grant

- **ELI - EXTREME LIGHT INFRASTRUCTURE - phase 2** implemented by the Institute of Physics of the Czech Academy of Sciences. The total amount of the grant is **CZK 1,859,487,766**, of which the EU contribution is CZK 1,580,564,601.

The main aim of the project was to finish up the European research centre ELI Beamlines, where the most intense laser system in the world was installed by an international team of scientists. Overall, the centre was supported by almost CZK 7.4 billion, of which European funds covered over CZK 6.3 billion.



The project with the lowest grant

- **We don't learn for the school, but for the life** implemented by the Elementary Art School Elementaria. The total amount of the grant is **CZK 100,412**, of which the EU contribution is CZK 85,350.

The project with the longest duration

- **Metals, plants and people** implemented by the Biology Centre of the Czech Academy of Sciences. The duration of the project is **84 months**.

The project with the shortest duration

- The project **Provision of the teaching infrastructure for new study programmes “Management of social services” and “Management of social services in the European background”** at the School of political studies of CEVRO Institute was implemented in the period of **6 months**.

The project with the highest number of partners

- The project **Support for pre-school and primary education in Brno** implemented by the Brno City. Overall **189 partner organisations were involved in the project**.

The call with the highest number of projects

- **Templates II – less developed regions – 5,859 projects** were supported in total.



The largest call

- **Excellent research** – overall, project applications in the amount of **CZK 11.8 billion** were supported within the call.

In the call Excellent research Palacký University in Olomouc managed to receive the financial support for its project **Plants as a means of sustainable global development**. The project was supported by a grant of CZK 360,814,427, of which the EU contribution is CZK 306,692,263.

“We are very happy that during the preparation of the project we were able to identify important global issues, especially the climate change and related problems with ensuring food security for the human population, and that we can contribute to their solution. More and more it turns out that, for example, drought and the adaptation of plants to it represents a huge challenge for science. Every shift in this area of research has a great social impact.”

Prof. RNDr. Ivo Frébort, CSc., Ph.D.,
Executive Director of the Centre of the Region Haná
for Biotechnological and Agricultural Research

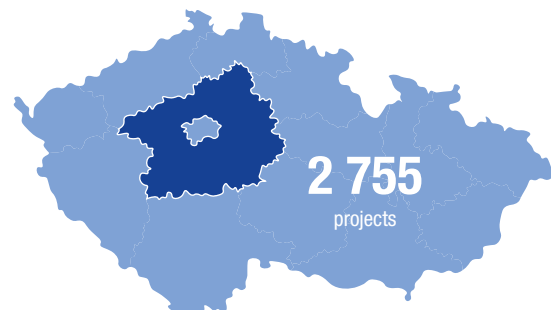


The beneficiary with the highest number of projects

- Charles University implements within OP RDE **89 projects**.

The Region with the highest number of projects

- The Central Bohemian Region



The beneficiary with the highest grant

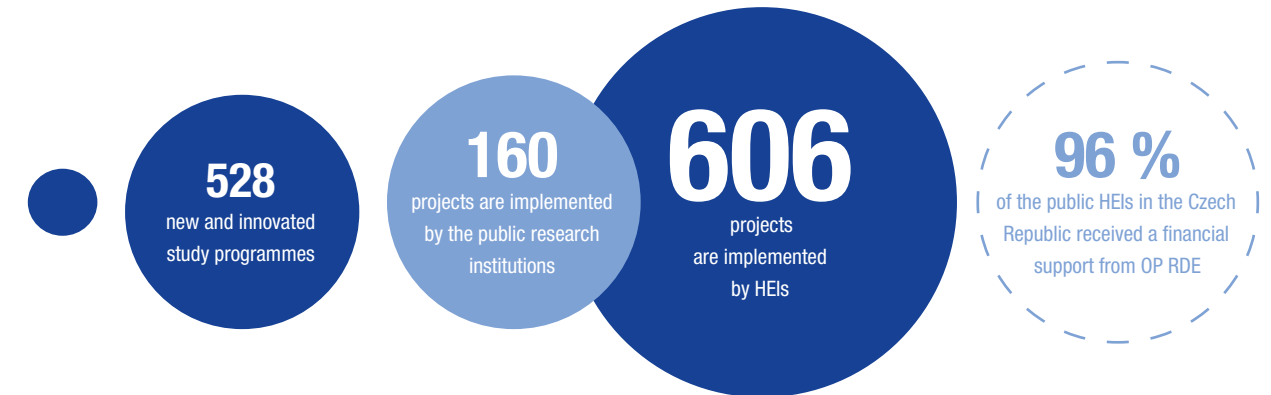
- Charles University implements projects in the total amount of CZK 7.7 billion, of which the EU contribution is **CZK 5.9 billion**.

The Region with the highest grant in total

- The South Moravian Region



HIGHER EDUCATION INSTITUTIONS (HEIs) AND RESEARCH ORGANISATIONS



“We have succeeded in accrediting eighteen new study programmes across five participating faculties, including technically oriented faculties or faculties of social sciences and humanities. Out of the brand new study programmes Arts management can be mentioned. This programme will prepare specialists for cultural institutions within a master’s degree. The further ones are the newly designed programme Applied Informatics in Industrial Automation and Automatic Control and Informatics in Industry 4.0, which substantially innovate the approach in IT education.”

Mgr. Jan Kalenda, Ph.D.,
Vice-Rector for Quality Management,
Tomas Bata University in Zlin

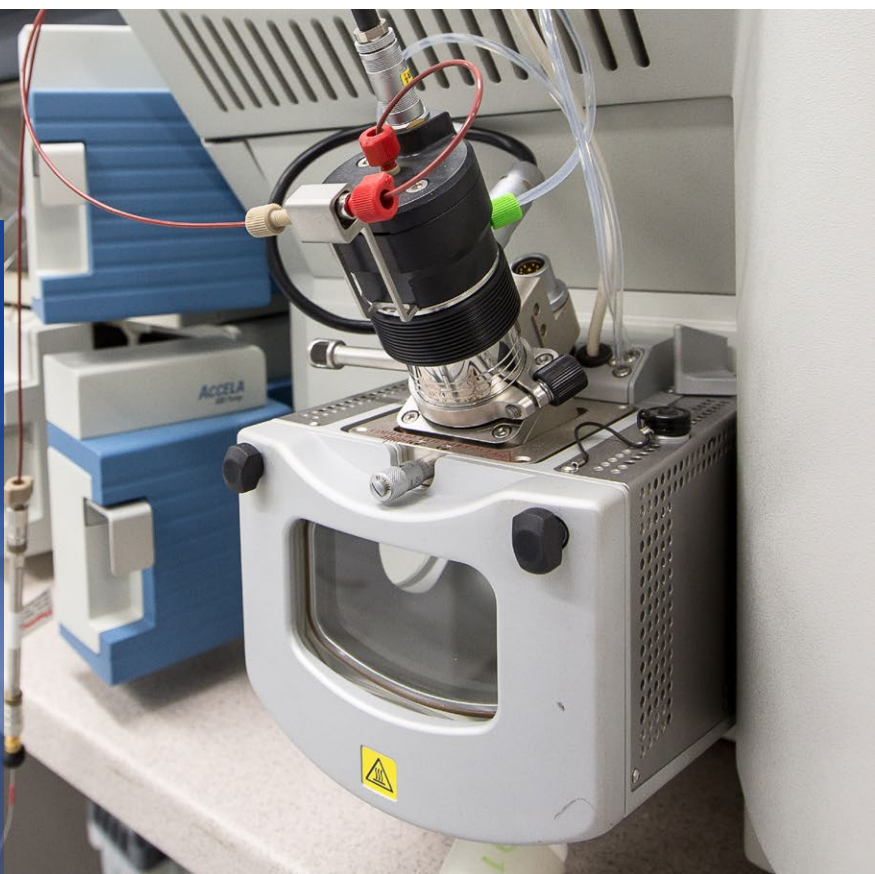
The strategic project of Tomas Bata University in Zlin was supported by a grant in the amount of **CZK 180,802,055**, of which the EU contribution is **CZK 153,681,747**.



2 227

students use newly built, expanded or modernized infrastructure for research-oriented study programmes

As part of the project of the University of South Bohemia in České Budějovice **Development of research-oriented study programmes of Faculty of Fisheries and Protection of Waters** machines and equipment was purchased for more than CZK 86 million. Investments included the common devices such as microscopes, freezing boxes, incubators, software, centrifuges, but also a highly sophisticated system of two liquid chromatographs and two large technological units. The project was supported by a grant of CZK 91,573,194, of which the EU contribution is CZK 77,837,214.

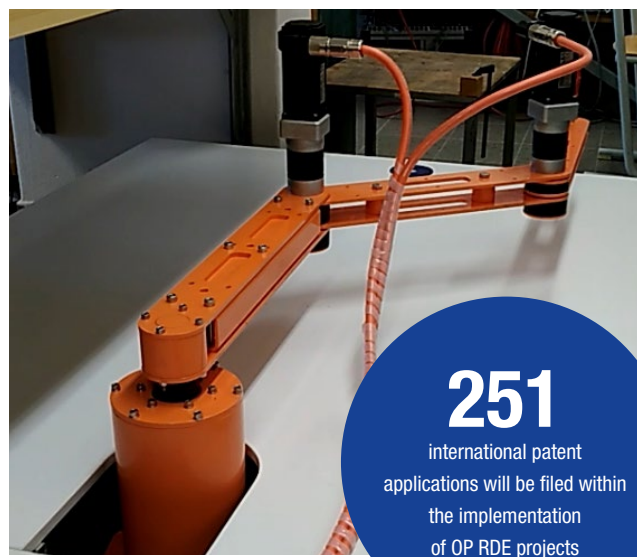


10 968

professional publications will be created within the supported projects

95

research teams from the Czech Republic are involved in international cooperation programmes



251

international patent applications will be filed within the implementation of OP RDE projects

Several patent applications are filed by Technical University of Liberec within the project **3D printing in construction and architecture**. The project was supported by a grant of CZK 72,698,912, of which the EU contribution is CZK 61,794,075.

“A forty-member team of employees from 8 institutes and departments of the four faculties of the Technical University of Liberec and Klokner Institute of Czech Technical University in Prague is working on the project. It focuses on mapping and solutions regarding the complex issue of using 3D printing in construction and architecture, including the development of a unique robotic device. That is why experts from different professions in the field of mechanical engineering, mechatronics, textile engineering, civil engineering and architecture are working on this project.”

Ing. Petr Zelený, Ph.D.,

Head of the Department of Manufacturing systems and Automation, Faculty of Mechanical Engineering, Technical University Liberec



178 494

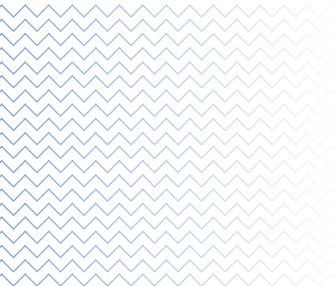
students of HEIs used modernized shared spaces so far, thanks to the call Support for the Development of the Study Environment at HEIs

One of the supported projects is **MUNI4students**. Masaryk University received a grant for it in the amount of CZK 386,773,447, of which the EU contribution is CZK 328,757,430.

“In my opinion, the project is unique because it aims to improve the study environment across the whole university, across all the 9 faculties and 3 independent economic centres of the university. All the involved parts of the university have significantly modernized their teaching spaces thanks to the project. We consider the strengthening and development of Wi-Fi connection and modernization of audio-visual techniques in 250 teaching rooms as the biggest change.”

Soňa Janíková,

Head of the Office for Development Masaryk University



The aim of the project is to create and operate a national centre **CzechELib**, which will effectively ensure the central purchase of key electronic information resources for the research and educational sphere in the Czech Republic. It will manage these resources and it will statistically evaluate their actual use by the target group. The project was supported by a total grant of CZK 1,296,971,224, of which the EU contribution is CZK 925,388,968.

118
 research organizations and libraries
 have access to information resources
 thanks to the CzechELib project

95
 new project intentions prepared
 with the support of the Smart
 Accelerator

The projects are implemented by the individual Regions. Prague Smart Accelerator, which is at the beginning of its implementation by the Capital City of Prague was supported by a total grant of CZK 65,798,888, of which the EU contribution is CZK 55,929,054.

“The Prague Smart Accelerator project cultivates the innovation environment in Prague as the most economically active part of the Czech Republic. We designed the project to step in those issues which mean a real burden for the Prague innovation environment. These are mainly the return of young researchers from internships abroad, flow of high school students into knowledge demanding fields of specialisation at universities, support of the early stages of knowledge-intensive business projects and in the mediation of relations between the academic and business community in the field of artificial intelligence and others.”

PhDr. Mgr. Vít Šimral, Ph.D. et Ph.D.,
 Counsellor for Education, Sports, Science
 and Business Support, Prague City Council

“The University Counselling Centre is designed not only for the students but also for the staff of the university, and it represents a wide range of different activities. We want to advise students with their job also during their studies. In the centre the students can search help with psychological-pedagogical or other problems, too. At the same time, we also try to help our employees. They can also struggle with a burnout syndrome, for example, or get into complicated situations at work or life and need help or advice.”

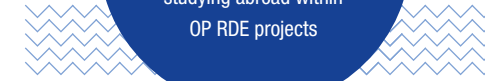
doc. RNDr. Martin Balej, Ph.D.
 Rector, University of Jan Evangelista Purkyně in Ústí nad Labem

The project **University of the 21st Century - Quality, Modern and Open** was supported by a grant of CZK 124,369,918, of which the EU contribution is CZK 105,714,430.

1 566
 students with special needs benefit
 from the new counselling and
 assistance support

MOBILITIES

688
 students from the Czech Republic
 studying abroad within
 OP RDE projects



Scientists from the Institute of Physics of Materials (IPM) of the Czech Academy of Sciences also travelled abroad. The project **International mobility of junior researchers of the IPM** was supported by a total grant of CZK 3,913,553, of which the EU contribution was CZK 3,326,520.

“In the project, we focused on very young workers standing at the beginning of their scientific career, i.e. postgraduate students and postdoctoral students. We wanted young scientists to get know the background and style of research work in respected foreign workplaces, to establish professional contacts. We also wanted their stay abroad to be beneficial for them at a professional level, so that they could use the acquired knowledge, for example, in preparation their dissertations, etc.”

doc. Ing. Luboš Náhlík, Ph.D.,
 Project investigator



Argentina
Australia
Austria
Bangladesh
Belgium
Bosnia and Herzegovina
Brazil

Bulgaria
Canada
Chile
China
Columbia
Cyprus
Denmark
Estonia

Ethiopia
Finland
France
Georgia
Germany
Great Britain
Greece
Hong Kong

Hungary
Iceland
India
Indonesia
Iran
Ireland
Israel
Italy

Jamaica
Japan
Kazakhstan
Latvia
Luxembourg
Malaysia
Mexico
Morocco

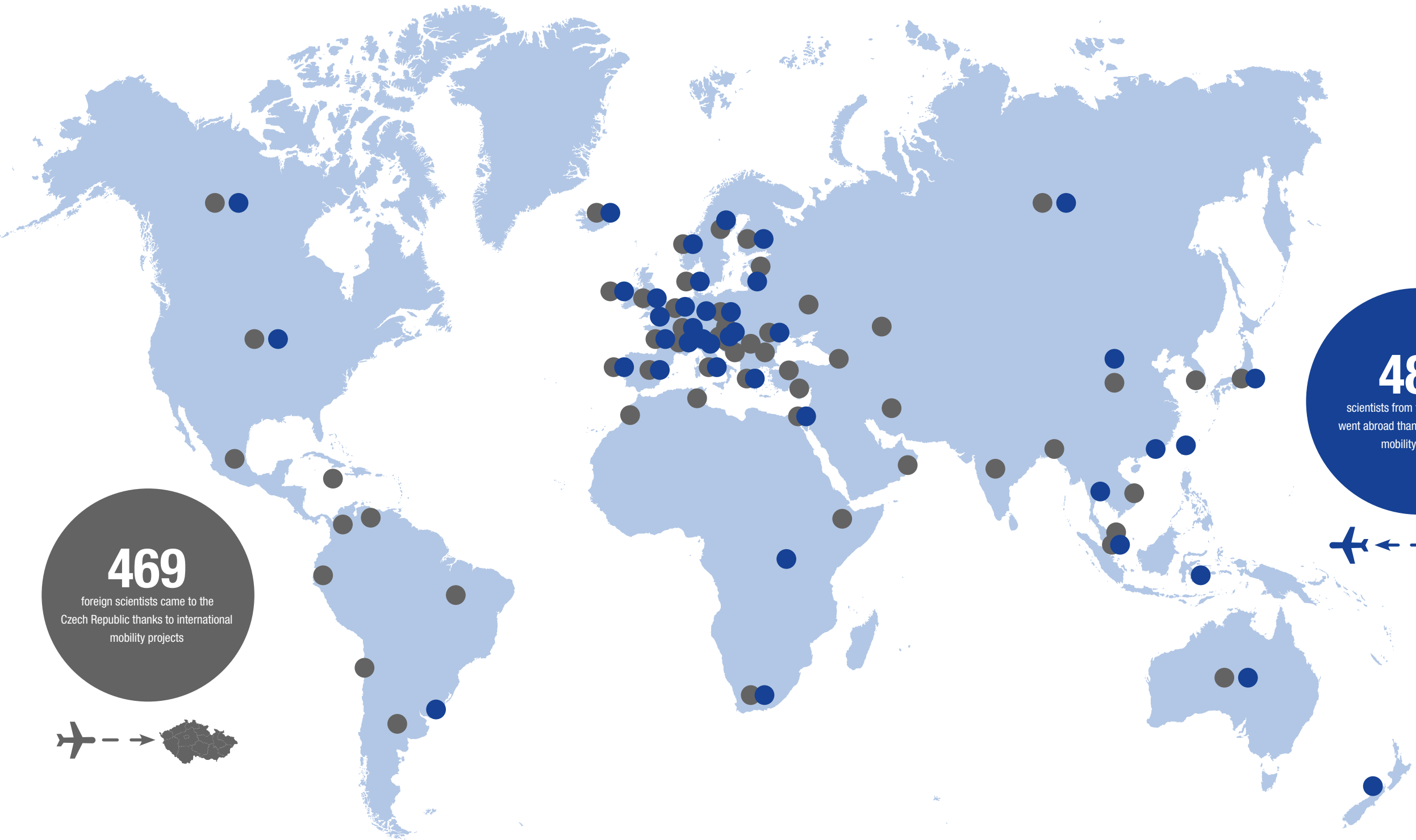
New Zealand
Norway
Oman
Peru
Poland
Portugal
Romania
Russia

Serbia
Singapore
Slovenia
South African Republic
South Korea
Spain
Sweden

Switzerland
Taiwan
Thailand
The Netherlands
The Slovak Republic
The USA
Tunisia
Turkey
Uganda
Ukraine
Uruguay
Venezuela
Vietnam



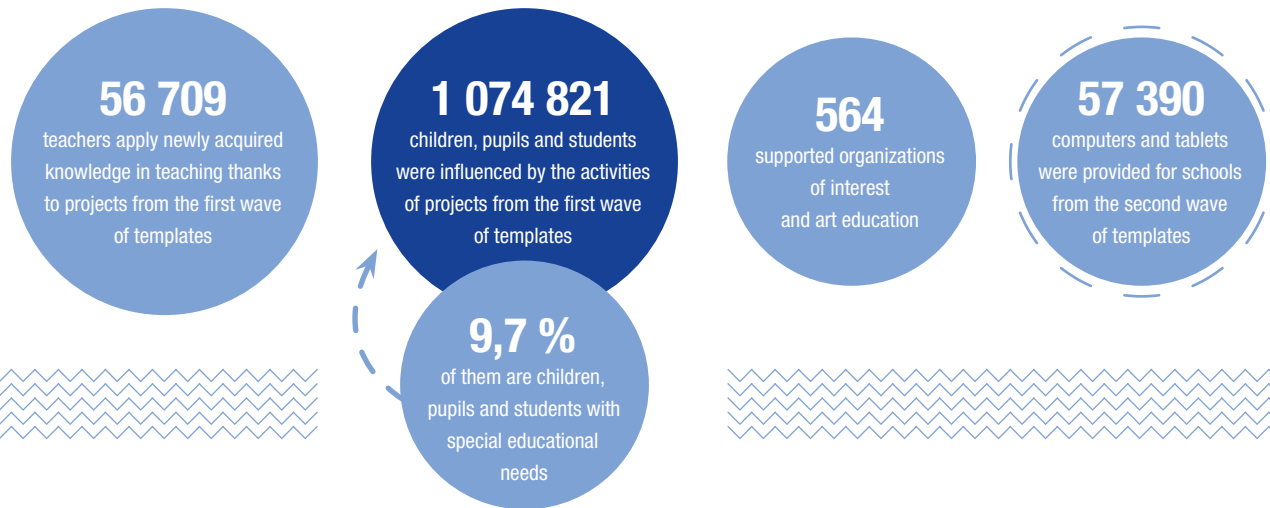
469
foreign scientists came to the
Czech Republic thanks to international
mobility projects



482
scientists from the Czech Republic
went abroad thanks to international
mobility projects



REGIONAL EDUCATION



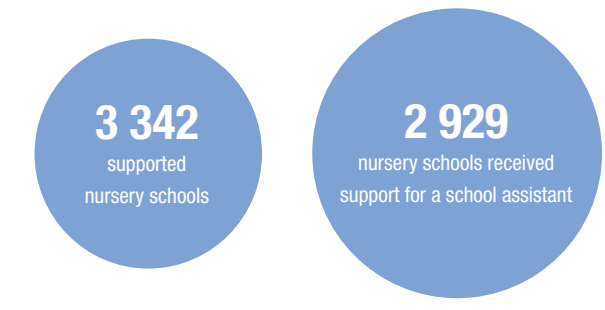
319 supported non-governmental non-profit organizations thanks to projects from the call „Non-formal Education“

One of the supported organisations is the Multicultural Centre in Prague. The project **Pupils' participation in the decision-making process** aims to increase the quality of civil education of pupils and students by means of their direct involvement into decision-making processes. The project was supported by a total grant of CZK 8,355,567, of which the EU contribution is CZK 7,102,223.

“We believe that confident citizens who follow what is happening around them can formulate their interests, know how to change things to be better and live a happier life. Instead of passivity and resignation they are actively interested in their surroundings, they can find support for their ideas and are not afraid to enter the decision-making process, whether as active citizens or as elected representatives. If they learn the competence for democratic culture already at school, they will soon learn to defend their opinion and at the same time to respect the interests and opinions of others.”

Mgr. et Mgr. Tereza Cajthamlová,
Project methodologist

NURSERY SCHOOLS



The nursery school PASTELKA in Ústěk also received a nanny from the Templates call. The project **Together We Will Manage** was supported by a total grant of CZK 387,459, of which the EU contribution is CZK 329,340.

“I am very happy that our nursery school could be involved in the call Templates for nursery and primary schools.

Realisation of this project helps especially children at our school but also parents and teachers in their loving effort for the best possible entry of their children into life. The aim of the personnel support within the project Together We Will Manage using the activity “nanny” is to provide assistance to teachers who include two-year-old children into a children’s group. The integration of at least two two-year-old children who will be three years old in the second half of the school year is a condition to be fulfilled.”

Mgr. Bc. Simona Ottová,
Director of the PASTELKA Nursery School, Ústěk

1 510 nursery schools used support for a nanny for two-year-old children



PRIMARY SCHOOL

3 655
supported
primary schools

31 804
school clubs
in primary schools

826
schools used a template
for meetings with parents



One of the schools that implemented the project from the Templates call is the Lyčkovo náměstí Primary and Nursery School in Prague 8. It received a grant of CZK 2,062,368 for the project **Support for a Meaningful School in the Form of Templates**, of which the EU contribution is CZK 1,031,184.

The project is interesting because it is based on the long-term vision of the school included in the Meaningful School programme. The programme is based on three main pillars - meaningful relationships, meaningful content of education and meaningful leisure time. "So we chose those templates, which will help to fulfil these three pillars. It concerns the templates, which I privately call internal templates - tandem teaching, mutual cooperation of teachers and new methods in teaching. They help to create collegial atmosphere and encourage mutual sharing. The template for parents' meetings, which we used both at primary school and nursery school, helps to support meaningful relationships with parents."

Mgr. Jan Korda,
Head of the Lyčkovo náměstí
Primary and Nursery School

SECONDARY AND POST-SECONDARY VOCATIONAL SCHOOLS



3 655
supported secondary and post-secondary
vocational schools

Thanks to the so-called templates, schools have the opportunity to improve the quality of education, for example using the form of tandem teaching, in which two teachers collaborate. This form of cooperation improves the quality of teaching and has a positive effect on students' results. With the request for the financial support (not only for tandem teaching), the Waldorf Lyceum in Prague in Opatov also succeeded in the call Templates for Secondary and Post-secondary Vocational Schools II. The project was supported by a total grant of CZK 662,444, of which the EU contribution is CZK 535,254.

"It's such a pedagogical challenge - to be properly alert and to enter sensitively the space formed by a colleague to benefit things. If it doesn't work, the lesson is a waste of time, but if it succeeds it is one of the most valuable benefits of tandem teaching. For teaching at secondary school, teachers' personalities are much more important than the actual school work. We teach students mainly because of who we are - as professional authorities, as different personality patterns, as acting people in the full sense of the word. Each of us has our own personal style, but, for a good cause, we can collaborate and find in the theme its full potential just thanks to our diversity, and this is the most valuable experience, this is real pedagogy. And that's exactly what students perceive most sensitively."

Mgr. Ondřej Ševčík,
The teacher at Waldorf Lyceum in Chodov, Prague

615
secondary and post-secondary
vocational schools used the support
for the work of a career counsellor

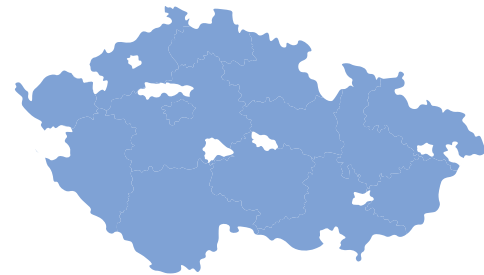
555
secondary and post-secondary
vocational schools used support
for tandem teaching

952
realized internships
of secondary school and post-
secondary vocational school
teachers at employers

ACTION PLANNING

98 %

of municipalities with extended competence are implementing the project of the Local Action Plan (LAP) for the Development of Education



One of the municipalities that successfully implemented this type of project was Prague 14. **The LAP Prague 14** and **LAP Prague 14 II** projects were supported by a total grant of CZK 12,622,089, of which the EU contribution is CZK 6,311,044.

“The project is about a common discussion and connection of school representatives, teachers and other participants who are involved in education in Prague 14 and how to enable them a common planning of a strategy for the development of education in their part of the city.”

Mgr. Ing. Lucie Svobodová,
Deputy Mayor of Prague 14 for Education
and European Finance (2014 - 2018)

3 940

participants in educational events of regional action planning projects

One of the projects of regional action planning is also the project **Strategic planning of the development of the educational system of the Liberec region**. The project was supported by a total grant of CZK 19,999,300, of which the EU contribution is CZK 16,999,405.

“We try to invent and subsequently implement meaningful educational events that, at the same time, lead to effective implementation of Regional Action Plan of the development of education in Liberec Region. The educational action called Compensatory Aids in Practice is definitely worth mentioning. This meeting focused on the key topic of promoting inclusion and included a unique show of compensatory aids, which today and daily allow disadvantaged students to be fully involved not only in education but even in routine activities.”

Mgr. Lucie Ptáková,
Main project manager



OP RDE contact information

<https://opvvv.msmt.cz>

e-mail: opvvv@msmt.cz

facebook.com/opvvv

instagram.com/op_vvv

OP RDE in Numbers | Ministry of Education, Youth and Sports
Issue number 1 | Released in 2020 | Free distribution
ISBN: 978-80-87601-16-7 | Editorial office: Harfa Office Park,
Českomoravská 2420/15, 190 00 Prague 9



11 800



250

1 074 821

Are you interested in what was supported by the OP RDE in your area? Feel free to download the project map application, where you find an overview of more than 16,000 implemented projects.

Google Play



App Store



118

11
054
899
758

84



EUROPEAN UNION
European Structural and Investment Funds
Operational Programme Research,
Development and Education

MSMT
MINISTRY OF EDUCATION,
YOUTH AND SPORTS